



# strecken.info & DB LiveMaps

#Einfachbahn

---

DB InfraGO AG | [strecken.info](#) & [DB LiveMaps](#) | InnoTrans Berlin | 24<sup>th</sup> - 27<sup>th</sup> September 2024



# strecken.info & DB LiveMaps

## Two sides of a tool with added value for users

### DB LiveMaps

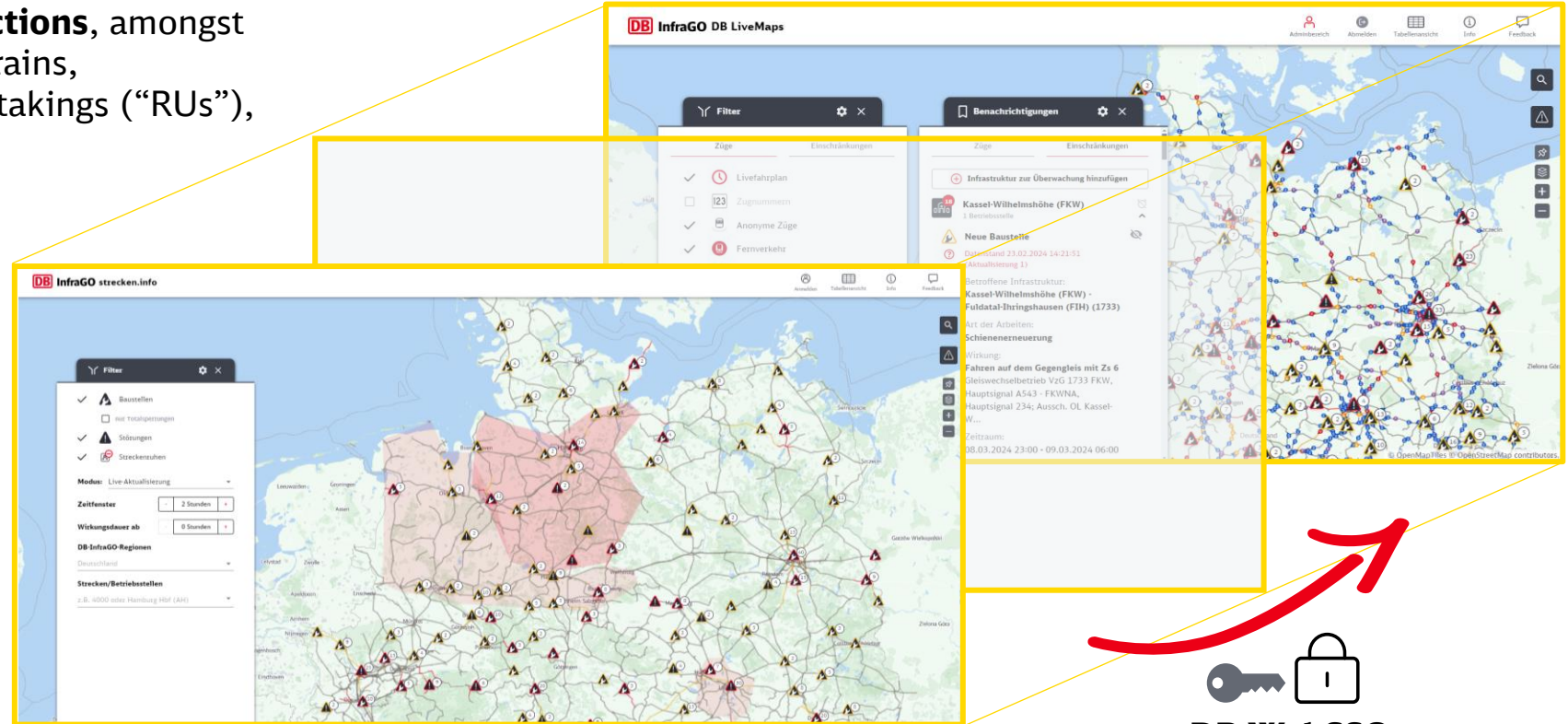
Access with DB WebSSO to more functions, amongst others real-time tracking of your own trains, sharing trains with other railway undertakings (“RUs”), bookmarking of specific restrictions and more detailed filter settings

> *paid access*

### strecken.info

Interactive, web-based map of the DB InfraGO AG rail network for the visualisation of current and upcoming infrastructure restrictions

> *publicly accessible*



# DB LiveMaps: Orientation redefined – modern interface, better performance & more self service



## Why the new system?

- Focus is the better **performance** and **reduced susceptibility to errors** as well as **optimised map display** and **user guidance**.



## What are the benefits of the new system?

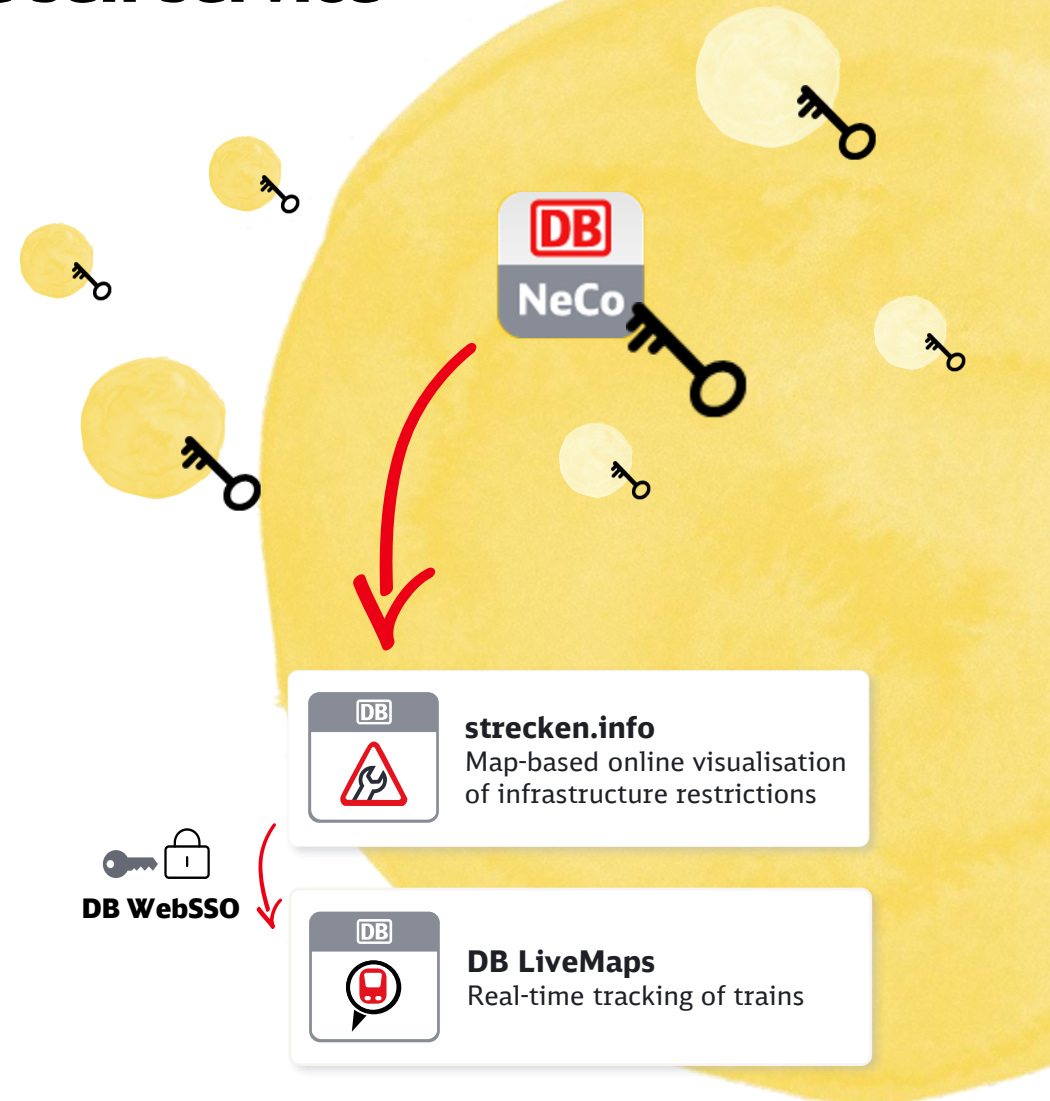
- **Simplified & secure access:** Automated ordering process via **DB NetzCockpit** and **approval** of users with requested role by the company's own **super user** in the central user and rights management system.
- **Independent train release:** As the role 'power user' you can independently activate the visibility of your own trains for other RUs.
- **Faster further developments:** Optimisations, new features, incorporation of user feedback.



## Notes

- **Mobile-optimised web application** can be accessed from all current mobile end user devices with Internet access.
- **One price** for DB LiveMaps access.

\*DB LiveMaps: See restrictions and trains plus share trains



# Access, costs, term and cancellation

Preliminary status on 4<sup>th</sup> July 2024



To acquire access to DB LiveMaps, **registration in DB NetzCockpit** and the **conclusion of a user agreement** are required.

The user agreement is concluded when the requested DB LiveMaps role is approved in DB NetzCockpit with the agreement to the terms of use.



**An annual user fee of € 49 (€ 79 from 2025 onwards) is charged per personal user account.**

The annual usage fee will be invoiced by DB InfraGO AG after activation by the central user and rights management system.



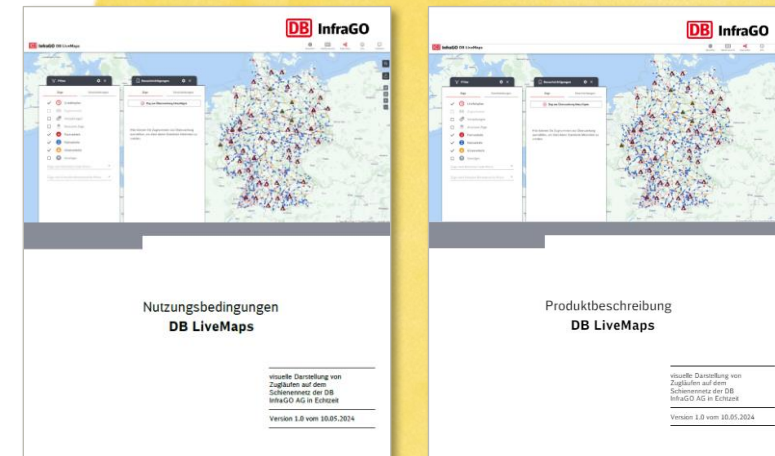
The licence agreement has a **term of one year from the conclusion of the contract**. It is **automatically extended for a further year** if it is not **cancelled in writing\*** by one of the contracting parties **with one month's notice before the end of the contract**.

\*The right to termination for cause without notice remains unaffected. Cause exists for DB InfraGO AG if a basic infrastructure usage contract (G-INV) and train path usage contract is no longer concluded between the contracting parties as well as in the event of wilful misuse and use of the access authorisation in violation of the contract or the law.



## Terms of use and product description

<https://www.dbinfrago.com/livemaps>







**Thank you.**