



E.C.O. Group

Transforming the future of mobility.

Berlin, February 2024



Metric tons

222.3 million

of freight carried

Passengers

3.75 billion

a year

Stations

5,700

in Germany

Employees

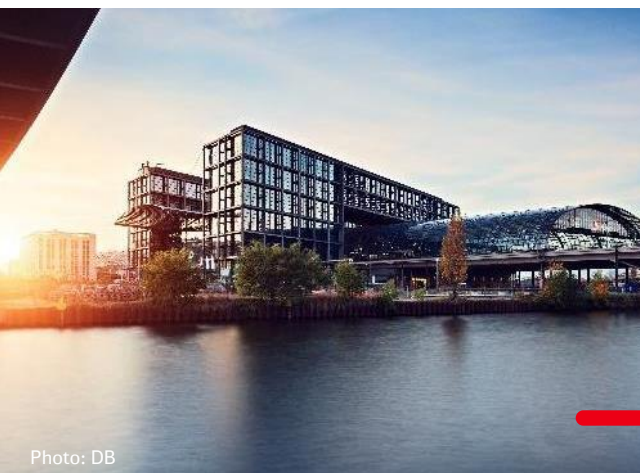
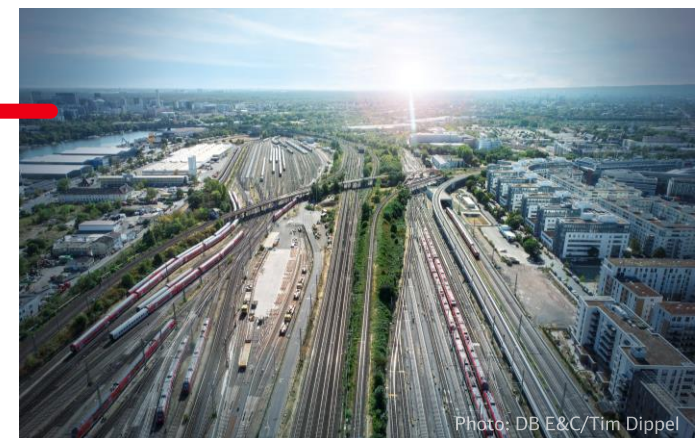
340,000

Around

33,000

Kilometers

Largest
rail network
in Europe



Data as of
Dec. 31, 2022

Our three business units – The intelligent integration of our **infrastructure expertise** into all service areas forms the backbone of the **DB E.C.O. Group**.



Engineering

Technology leader in rail infrastructure design and construction

Consulting

Innovative solutions for the mobility and logistics of tomorrow

Operations

Operations and maintenance of complex railway systems around the world

With our **Engineering services** for infrastructure, we lay the foundation for the **rail system**.



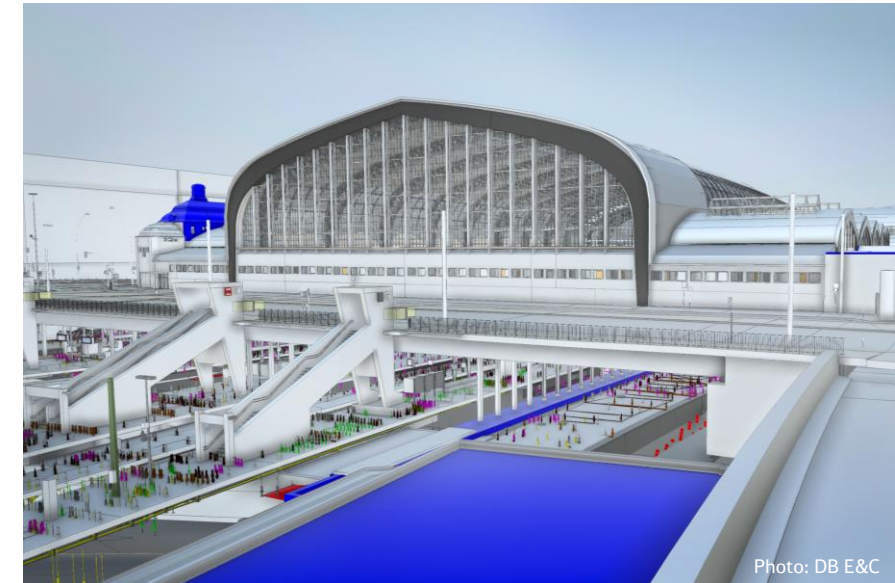
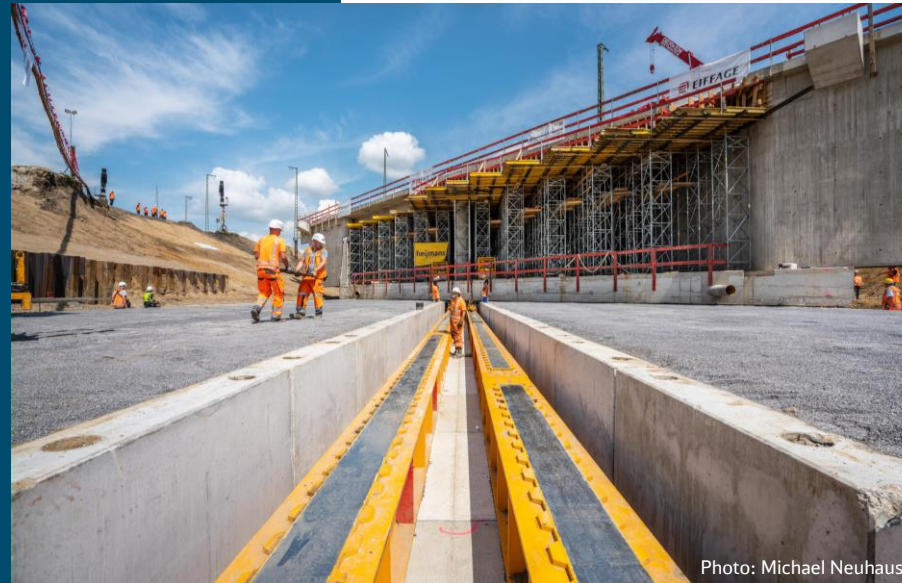
Design

**Construction
Supervision**

Project Management

**Validation and
Assessment**

**Environmental and
Geoservices**



Providing
key resources

Drivers
of expertise

Mobile and digital
data capture

BIM
methodology

New-build
and upgraded
infrastructure

Design
centers

Automating our
services

Knowledge transfer
between Germany and
countries abroad

Our **consulting services** provide **mobility solutions** of tomorrow, combining consulting with **digital expertise**.



Mobility and Logistics



Photo: Marco2811 - stock.adobe.com

Digitalization



Photo: DB AG/Oliver Lang

Rail and intermodal logistics

Strategy & Organization, Training & Expertise

Zero Emission Mobility

Operations, Maintenance, Rolling stock

IT-Solutions and Services, embedded systems

With our **operating services** we apply our experience in the operations and maintenance of **complex railway systems** worldwide.



Passenger and freight transport

Strategic Train Service Planning
optimizes railway networks

System integration by digital
standard framework



Maintenance

Operations

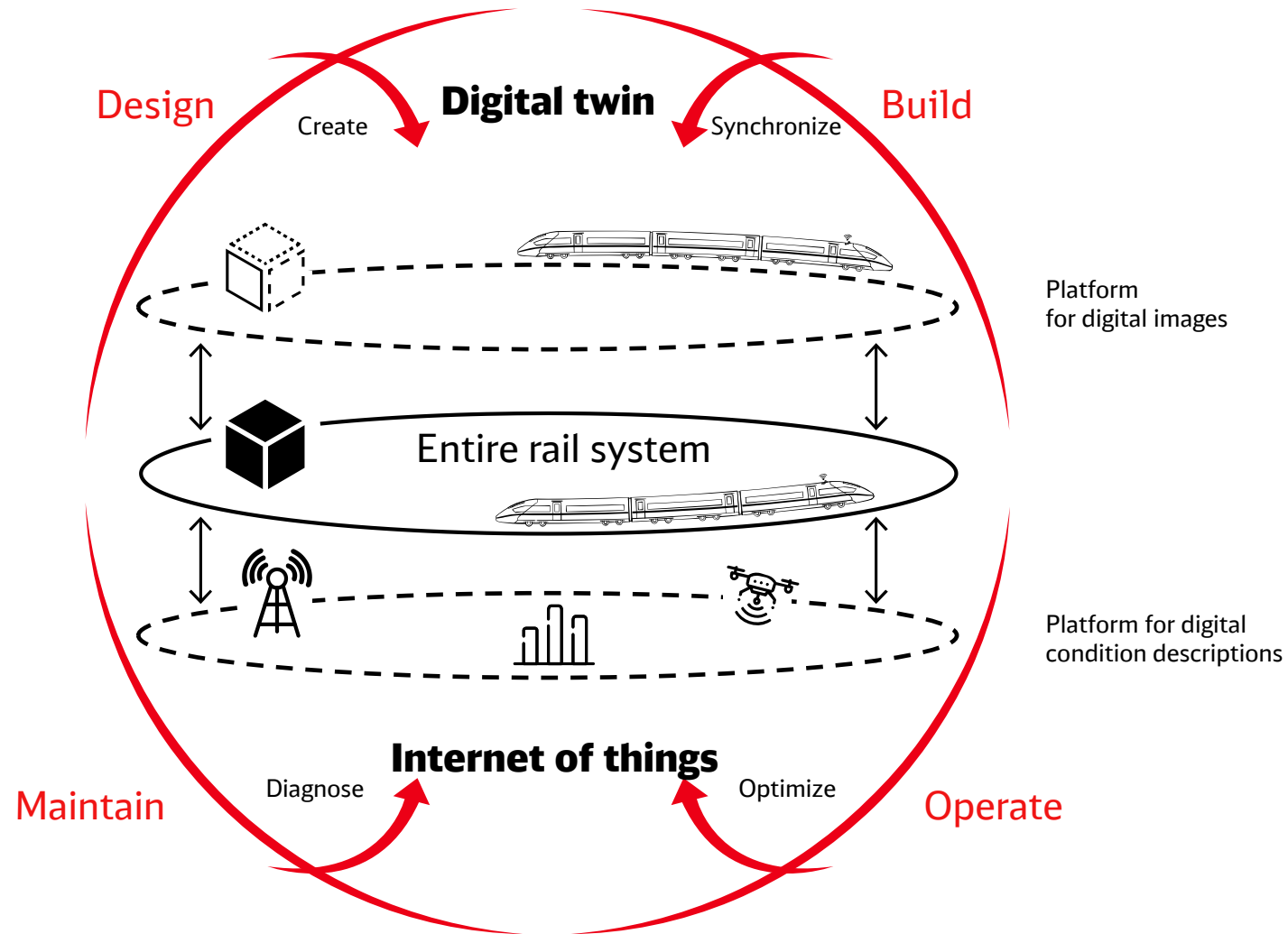


Condition monitoring and
diagnostics

Rail infrastructure

Rolling Stock

We are excellently positioned to drive forward the **digitalization** of the **entire rail system**.



Along the **entire value chain**, we uniquely merge our expertise in the integrated rail system with digital technologies.



DB E.C.O. Group

Project management & Consulting

Shadow Operator / Early Operator

Feasibility studies

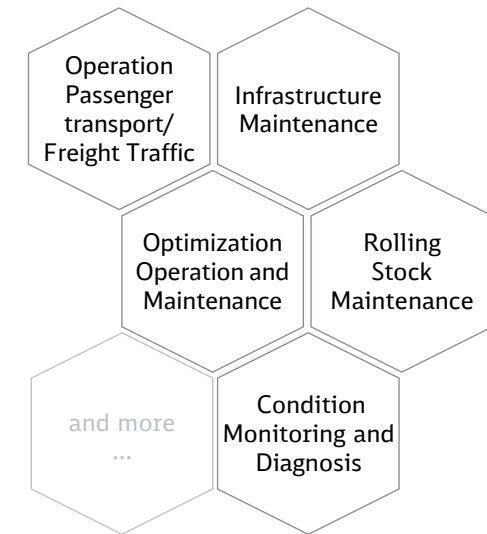
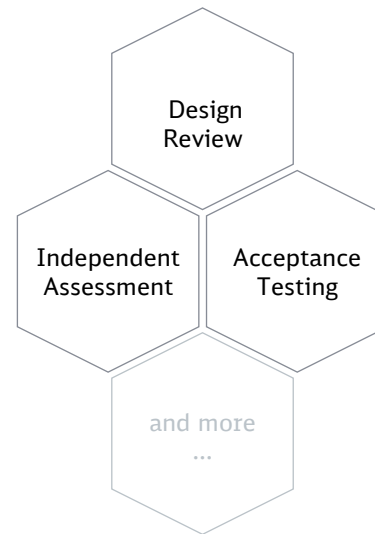
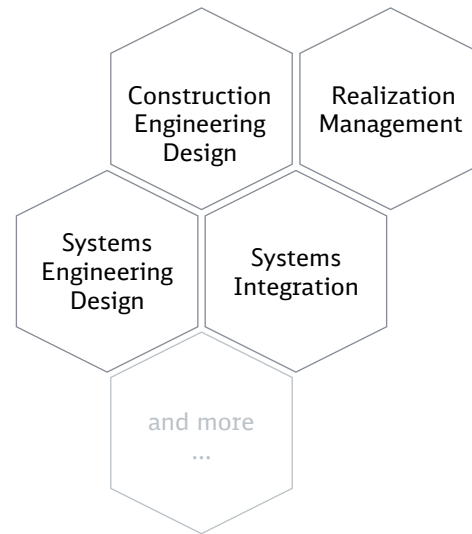
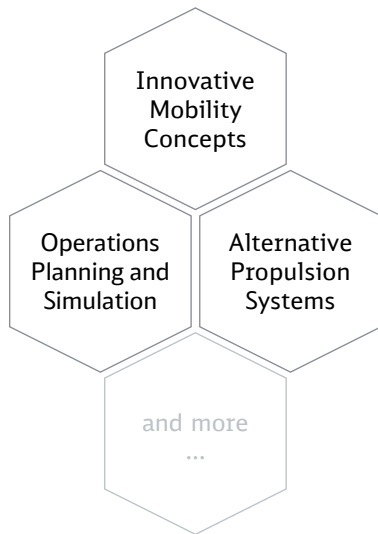
Design

Construction
supervision

Testing and
commissioning

Operations

Maintenance



The history of the DB E.C.O. Group at a glance.



1966

Deutsche Eisenbahn-Consulting founded

2003

DE-Consult is made an affiliate of the new DB company DB ProjektBau

2016

DB ProjektBau and DB International merge, forming DB Engineering & Consulting

2019

Merger of DB Engineering & Consulting, Deutsche Bahn International Operations, and infraView under the roof of the **DB E.C.O. Group**

2002

DE-Consult is wholly owned by DB

2007/2008

DE-Consult becomes DB International and operates as an independent company within the DB Group. DB ProjektBau works on DB's domestic projects, while DB International focuses on non-DB client business in Germany and international projects.

2017/2018

Deutsche Bahn International Operations founded
DB Engineering & Consulting acquires infraView

2020/2021

DB Engineering & Consulting acquires engineering and software developer ESE GmbH and acquires shares in inno2grid

The companies* in the DB E.C.O. Group represent for **engineering, consulting and operating services** for the overall rail system.



DB Engineering & Consulting

Consulting, design and realization for infrastructure and mobility projects



DB International Operations

Operation and maintenance of passenger and freight transport outside Europe



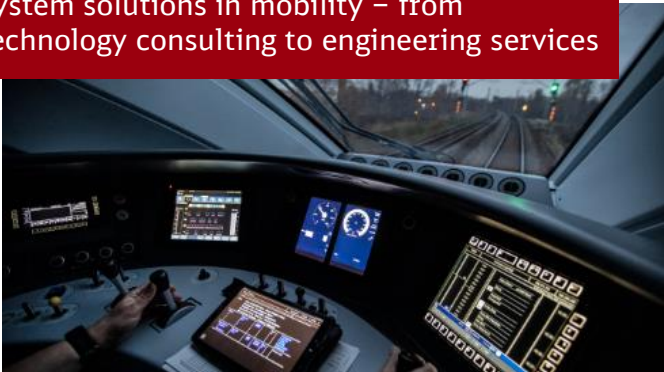
InfraView

Operator of IoT platforms for condition monitoring and predictive maintenance



ESE

System solutions in mobility – from technology consulting to engineering services



Inno2grid

Connection and digitalization of energy and mobility



DB E.C.O. North America

Consulting for rail and transit transportation in the United States and Canada.



*Excerpt from our involvements

Since 1966 we have been implementing **projects in more than 100 countries** and on all continents.



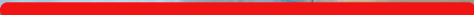
Employees

7,600

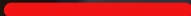
Nations

96

As of Dec. 2023



Fostering Strong Rail, we globally transform
tomorrow's innovative and sustainable mobility
and transport solutions.



**Thank you for your
attention.**



Photo: Getty Images