



# DB Bahnbau Gruppe GmbH

The company at a glance

---

Last modified: March 2024

# We build Strong Rail.



- Deutsche Bahn is pursuing an endeavour of fundamental importance: **to shift more traffic to rail** - for the climate, for people, for the economy and for Europe.
- And DB's overarching strategy **Germany needs Strong Rail** will lay the foundation we need to be successful in that endeavour.
- To make Deutsche Bahn and its rail infrastructure more robust, more powerful and more pioneering, Strong Rail needs a **strong partner: DB Bahnbau Gruppe**.
- **We are building Strong Rail** and thus making our contribution to getting the overarching strategy rolling.
- DB Bahnbau Gruppe is a **fully functioning competitor** in this.





# Sustainable and innovative

- Shaping the future means taking responsibility. For people and for the environment.
- We have made it our mission to develop sustainable solutions for track work and to promote innovative ideas.

## Our projects in the field of sustainability and environment:

### Recycling

Processing of valuable building materials and resources

### This is green

Forward-looking measures promoted by the Group

### Alternative energy systems

Carbon neutral and independent with fuel cells

## Our projects in the field of innovation and digitalisation:

### Gleislabor track lab

Our innovation platform

### Digitalisation | BIM

Transformation for shared progress

[Learn more](#)



# Figures



<b>Employees</b>	Approximately 3.700, plus 400 vocational trainees and cooperative education students
<b>Revenues</b>	Approx. EUR 1 billion per annum
<b>Locations</b>	Present at over 40 locations in Germany, head office in Berlin-Adlershof
<b>Structure</b>	Four service units, 29 technical units and three qualification centres ensure a wide-ranging, high-quality portfolio



# Organisation and structure



**Managing Director for  
Finance/Controlling**  
Markus Faller

**Managing Director for  
Engineering and  
Chairman of the Board**  
Markus Egerer

**Managing Director for  
Human Resources**  
Dr Doris Radatz

**Board of  
Managing Directors**

**Track Works SU**  
Jörg Fenske

**Electromechanical  
Engineering SU**  
Andreas Saft

**Prime Contractor  
Projects SU**  
Dr Ali A. Elahwiesy

**Special Disciplines SU**  
Peter Grimm

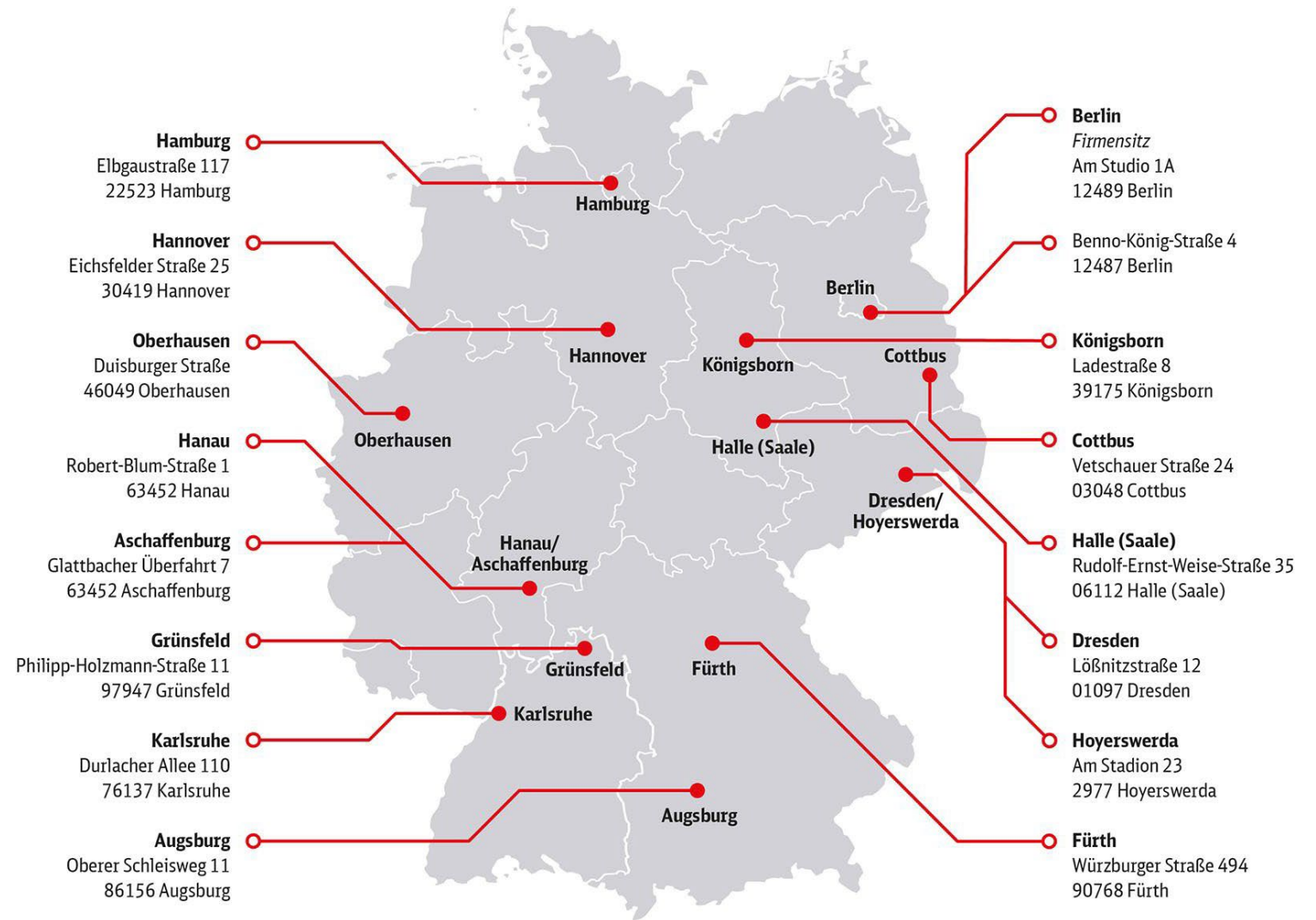
**Four strong  
service units**

**Technical units**

# Main locations of DB Bahnbau Gruppe



- With over 40 sites, we not only have a nationwide presence, but are also quickly on the job anywhere in Germany.
- Our main locations are shown on the map.
- The company's head office and principal place of business is Am Studio 1 A, 12489 Berlin.



# Track Works Service Unit

Really good tracks.



- The **Track Works** Service Unit takes care of getting the rails on the track.
- Its core tasks are:

## Track laying

- Construction, renewal and maintenance of tracks and points
- Replacement of rails, installation of expansion joints
- Bridge sleepers
- Concrete slab track
- Trackside construction work in civil and underground engineering

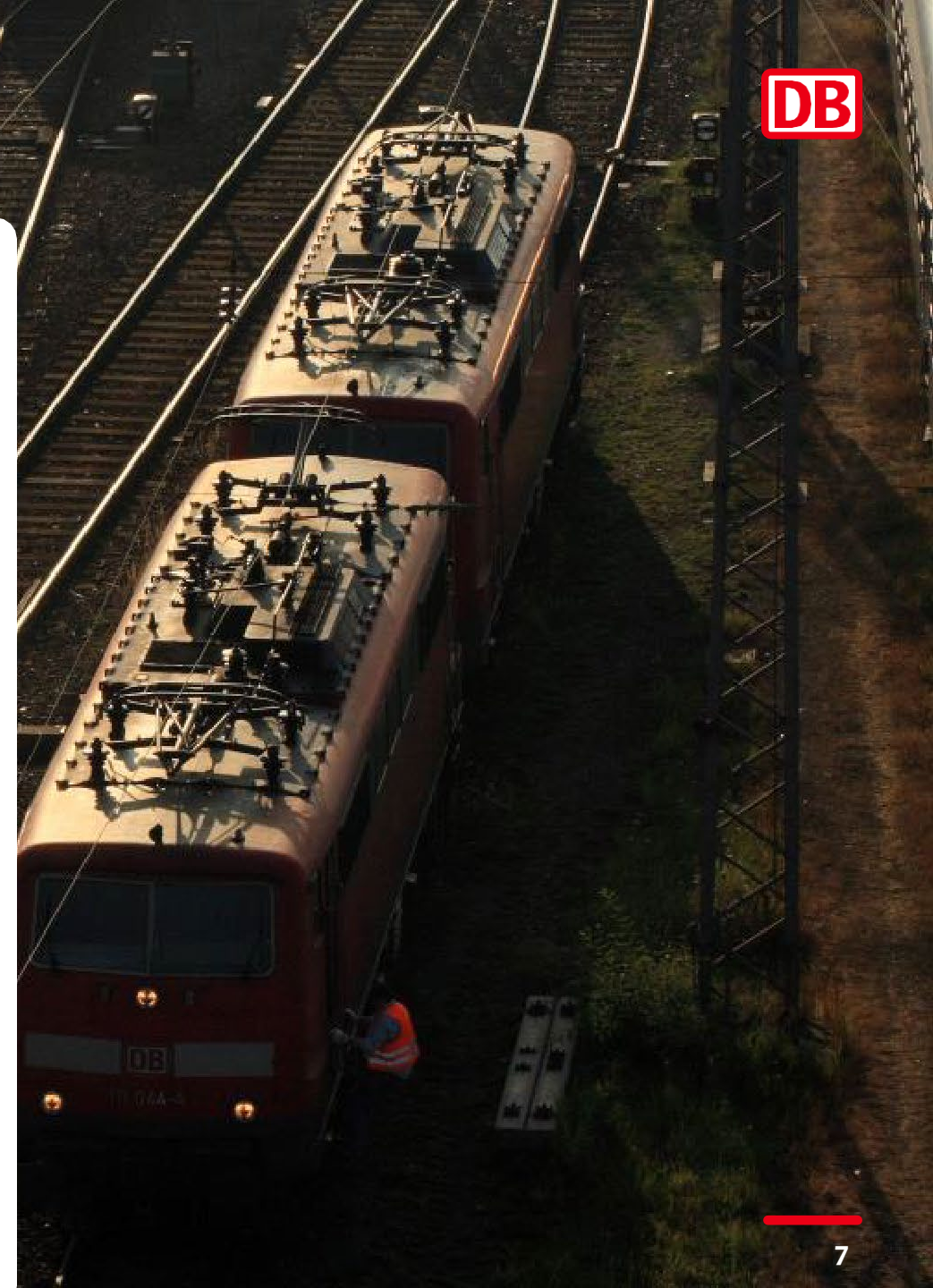
## Track welding

- Aluminothermic joint welding
- Joint welding using the arc method
- Weld-based reconditioning of tracks and points
- Manufacturing of seamless tracks and points using de-stressing methods
- Manufacturing and repair of insulated rail joints

- **Machine technology**

- Milling, conveyor and tamping technology
- Logistics
- Machine maintenance

[Learn more](#)





# Electromechanical Engineering Service Unit

Ever-present. Future-oriented. Our technical systems.



- The Electromechanical Engineering Service Unit supplies the line with all the **technical systems** needed for rail operations to run smoothly.
- This includes:
  - **Energy systems**
    - Overhead line equipment
    - Electrical power systems
    - Underground cable installation
    - Third rail
    - Alternative energy systems
  - **Train control systems**
    - Control-command and signalling
    - Telecommunications systems
  - **Design and development**
    - Technical equipment design
    - Production and development

[Learn more](#)



# Special Disciplines Service Unit

Built to connect.



- The Special Disciplines Service Unit supplies the line with all **structural engineering** products and **recycling services**.
- They include the following:
  - **Bridges and signal brackets**
    - Steel, reinforced concrete and provisional bridges
    - Signal brackets
  - **Passenger transport facilities**
    - Platform facilities and temporary platforms
  - **Solid constructions**
    - Retaining walls, concrete repair and fire protection
  - **Recycling**
    - Collection of materials removed from the permanent way across Germany for reprocessing and recycling

[Learn more](#)





# Prime Contractor Projects Service Unit

With clockwork precision. But bigger.



- The Prime Contractor Projects Service Unit acts as a general contractor for **highly complex large-scale projects**, centrally managing the different disciplines at DB Bahnbau Gruppe from a single source.
- We are responsible for the interdisciplinary management of
  - **Large-scale projects in Germany**
  - **Strategic projects abroad**

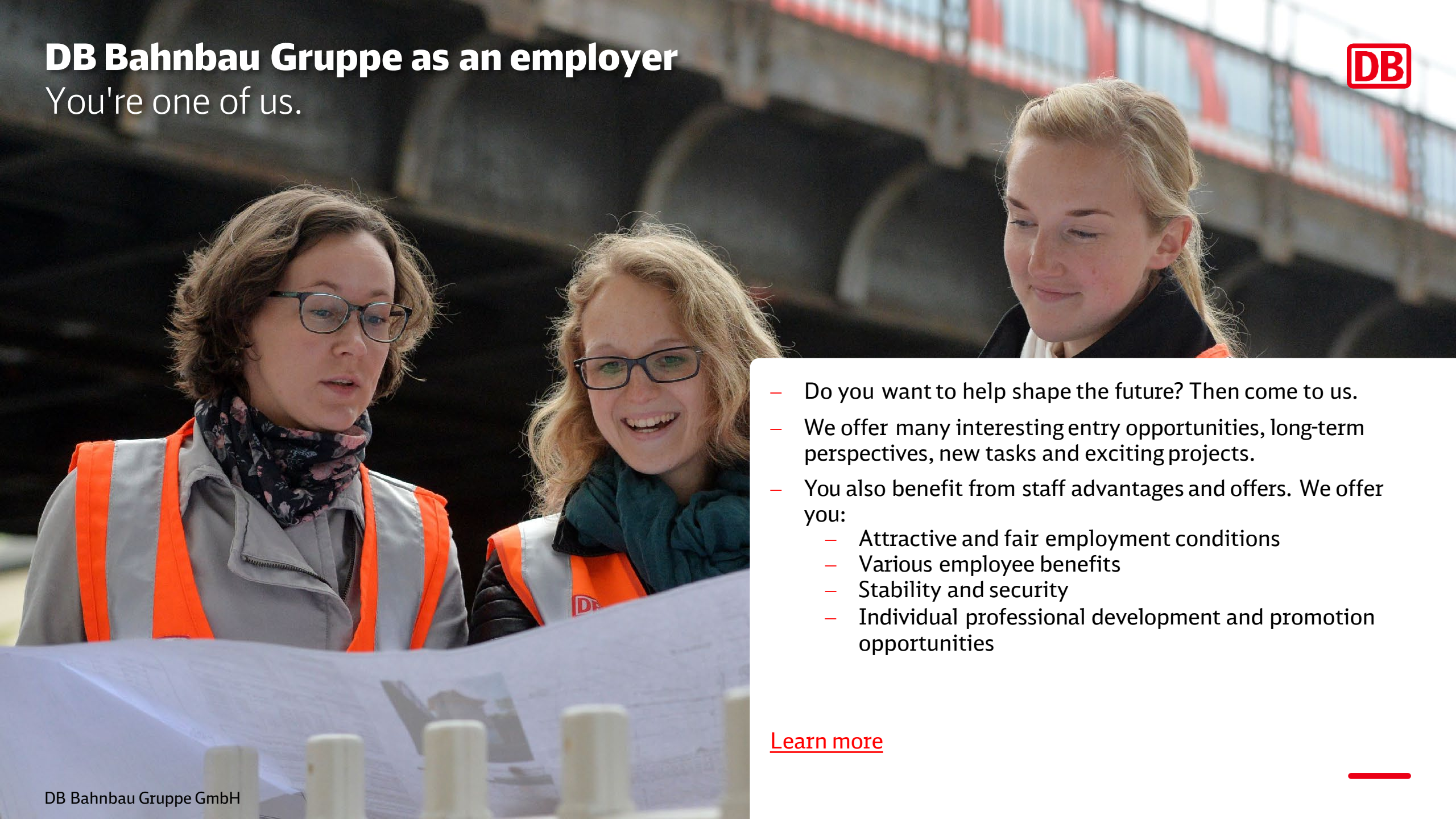
[Learn more](#)





# DB Bahnbau Gruppe as an employer

You're one of us.



- Do you want to help shape the future? Then come to us.
- We offer many interesting entry opportunities, long-term perspectives, new tasks and exciting projects.
- You also benefit from staff advantages and offers. We offer you:
  - Attractive and fair employment conditions
  - Various employee benefits
  - Stability and security
  - Individual professional development and promotion opportunities

[Learn more](#)



A photograph of three railway workers in bright orange high-visibility uniforms and hard hats working on a railway track. They are applying a substance from a bucket to the rails. The background shows stacks of railway tracks.

# Thank you





# Bahnbau Gruppe



Wir bauen die starke Schiene.