



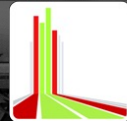
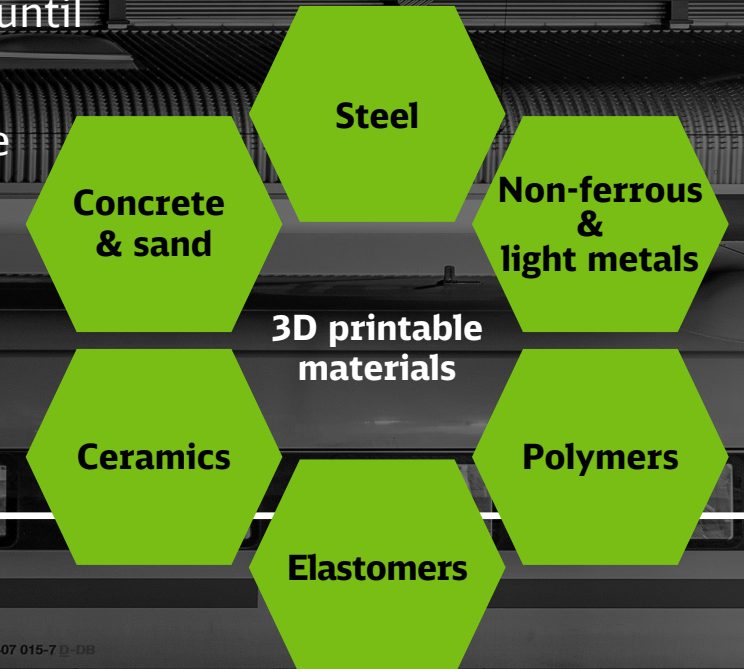
3D printing @ DB? For sure!

On-demand spare parts,
tools for production
and prototypes

With 3D printing, we ensure high vehicle availability, safety and travelling comfort for passengers. Over 150,000 parts have already been 3D printed at DB. The advantages:

- Fast, safe and flexible
- Saves resources and is sustainable
- Often more economical than conventional manufacturing processes

- Feasibility assessment and support until approval for operation
- Digitisation of parts through reverse engineering
- Creation of prototypes, tools and models
- Optimisation of work processes according to LEAN concepts



3D printing
For Strong Rail.

Where 3D printing scores

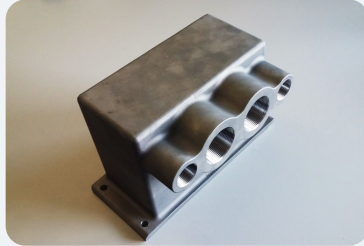


**Partial replacing
makes economic sense**



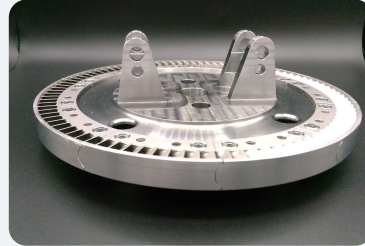
Guide sleeve door locking
Track work vehicle

**Clearing
obsolescence**



Terminal box
Air-conditioning motor

**Integrating
functionalities**



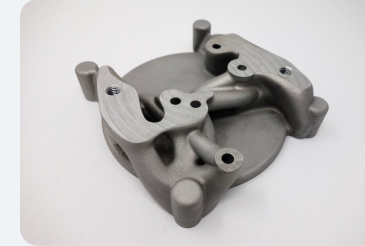
Segments for turbines
Steam locomotive

**Reducing
procurement costs**



Braille handrail sign
DB Railway stations

**Making use
of bionic design**



Adapter flange
Control valve test stand

This is green.

Using high-tech.
For the environment.
3D printing at DB.

no. 149

**Creating
prototypes & samples**



Concrete sitting bench
DB Railway stations

**Manufacturing
from batch size = 1**



Cable cladding
Special fitting

**Perfect-fit
auxiliaries & tools**



Positioning jig
to stick pictograms

**Ensuring
parts availability**



Air grille
for passenger trains

**Your contact
for 3D printing @ DB.**

✉ 3D-Druck@deutschebahn.com

☎ +49 69 265-42435

🌐 db.de/3d-druck